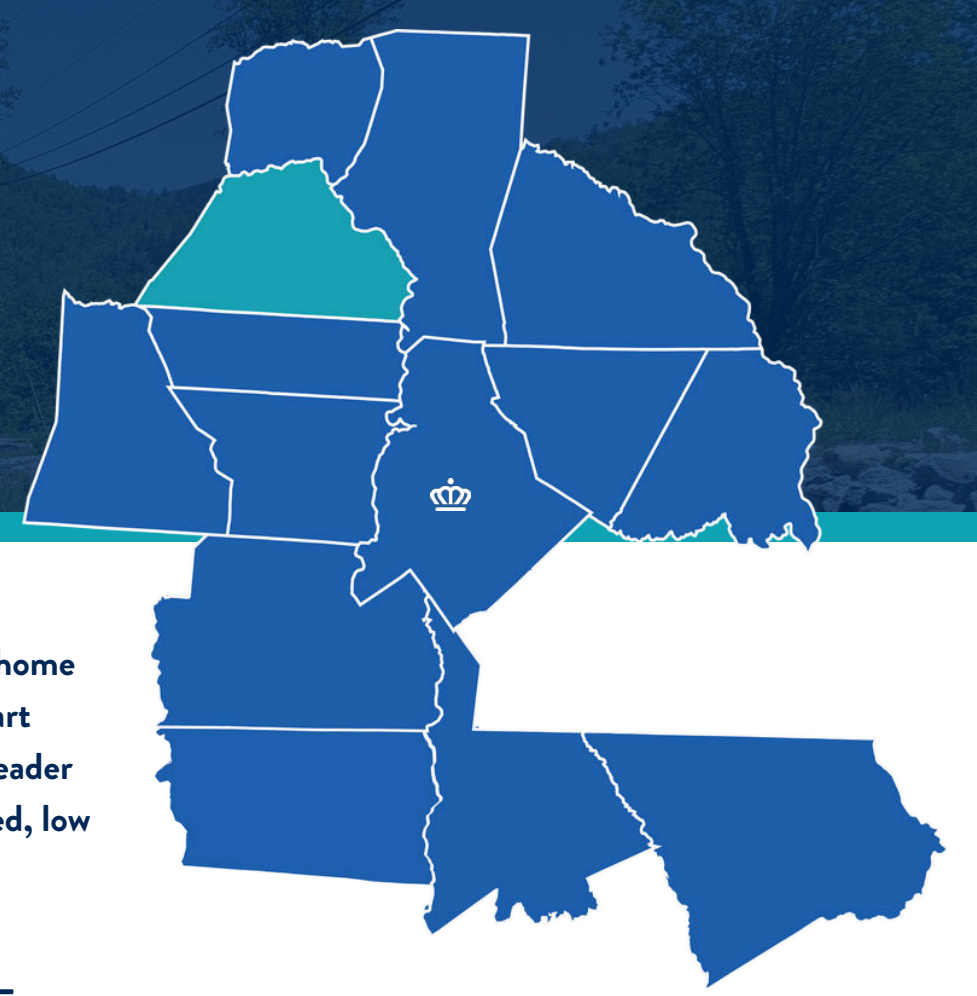


CATAWBA COUNTY

Cities/ Towns: Catawba, Newton, Conover, Sherrills Ford, Maiden, Hickory, Claremont



Catawba County, Charlotte's Great Northwest, is located 40 minutes northwest of Charlotte in the foothills of the Appalachian Mountains. Bordered by Lake Hickory and the Catawba River, Catawba County offers scenic views and outdoor recreational opportunities. The county is home to Lenoir-Rhyne University, Appalachian State University's Hickory Campus, and Catawba Valley Community College with its state-of-the-art Workforce Solutions Complex. Catawba offers several livable downtowns with high-quality cuisine and live entertainment. A manufacturing leader within the Carolinas and home to over 425 manufacturers, Catawba County is an ideal fit for opportunities seeking an economically-connected, low cost business environment that is supported by long-term investments by the community in talent and economic development.

POPULATION 164,926



EST POPULATION 174,307 (2030)
 MEDIAN AGE 41.7
 LABOR FORCE 79,447
 REGIONAL LABOR FORCE 1,536,696
 (CHARLOTTE REGION)

INCOME

MEDIAN HOUSEHOLD INCOME

\$65,790

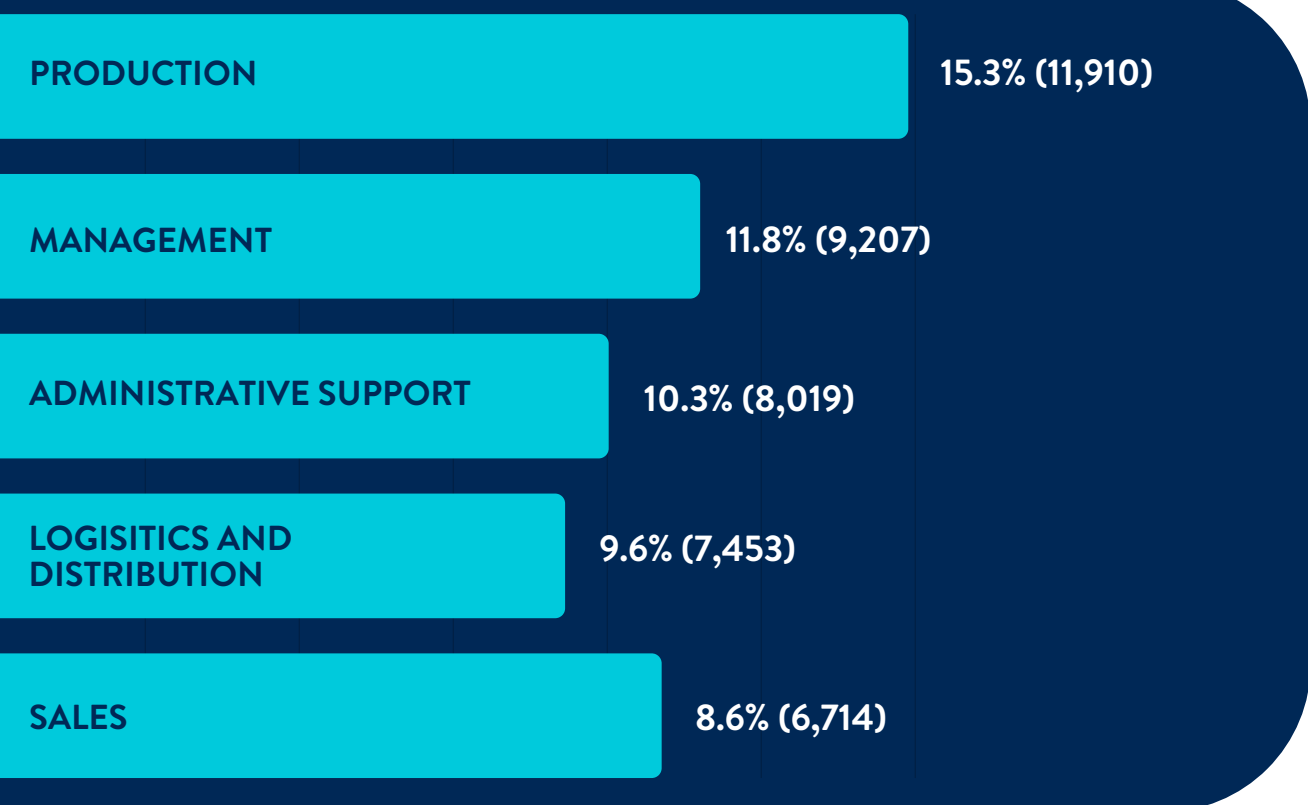


AVERAGE WAGE

20.24/hr

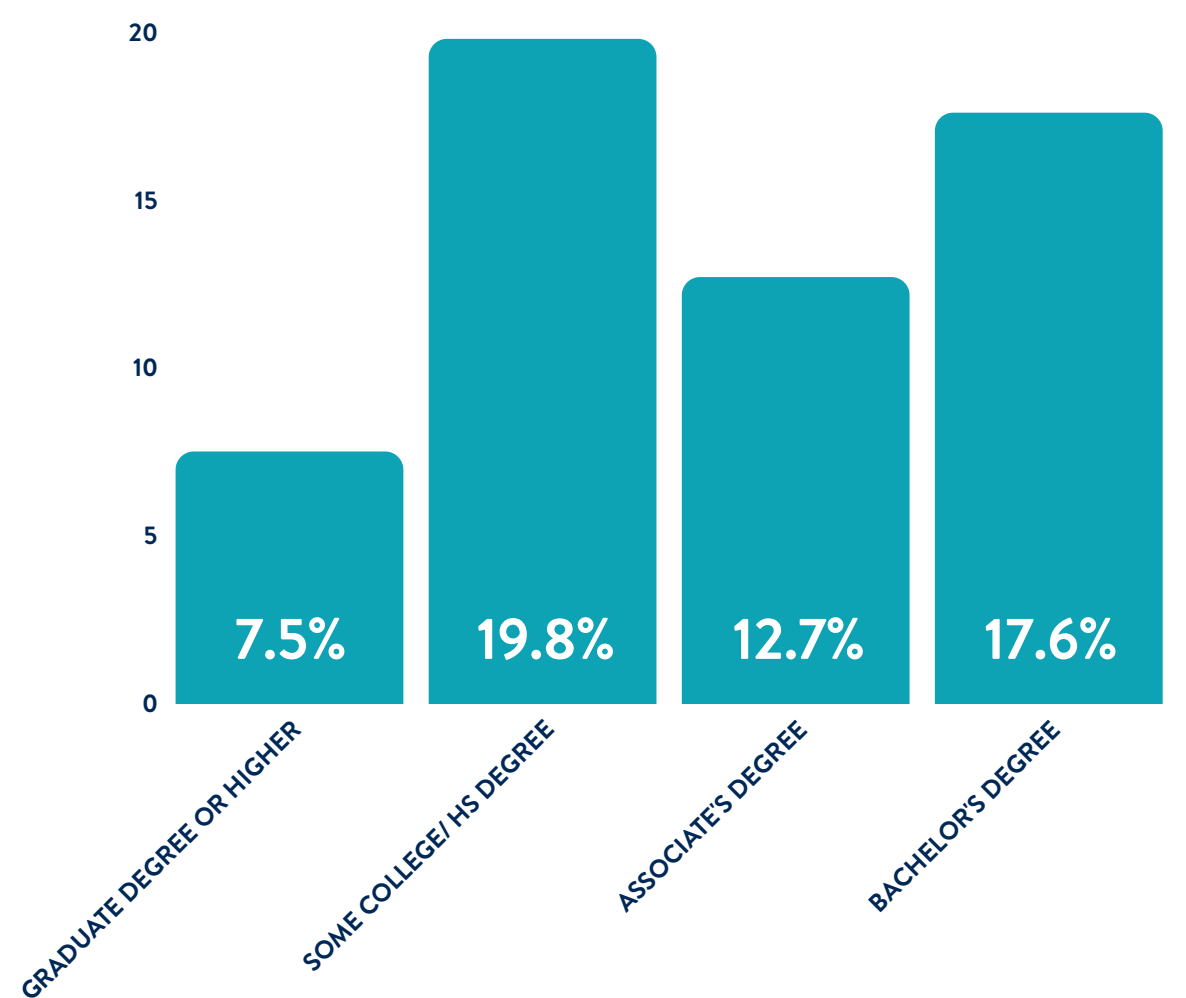


TOP 5 LARGEST SECTORS BY EMPLOYMENT PERCENTAGES



EDUCATION POPULATION AGE 25+

HIGH SCHOOL GRADUATION RATE 86.9%
 POST SECONDARY DEGREE 57.6%



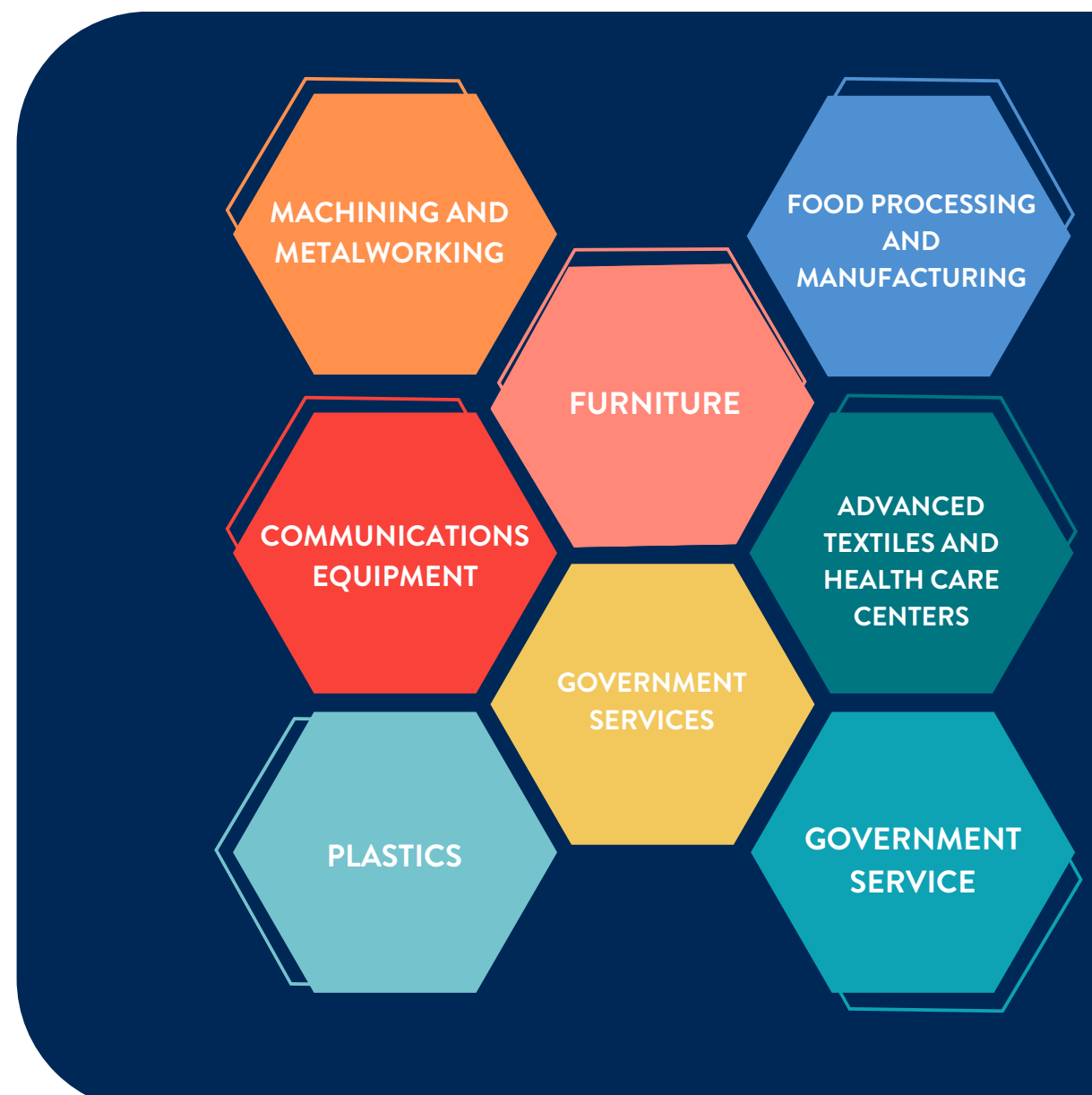
EDUCATIONAL INSTITUTIONS



MAJOR EMPLOYERS



INDUSTRY CLUSTERS

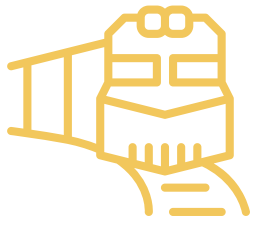


TRANSPORTATION/ ACCESS



AVERAGE RESIDENT COMMUTE TIME: 23.5 MINUTES

CLOSEST INTERSTATE HIGHWAY ACCESS: INTERSTATES 77, 40, 85 AND HIGHWAYS 321, 16 , 70, 10, 150



RAIL – NORFOLK SOUTHERN

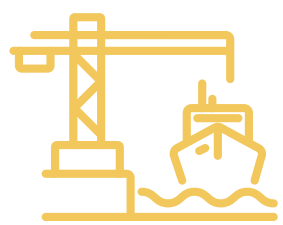


AIRPORT – 50-60 MINUTES TO CLT INTERNATIONAL AIRPORT –7TH BUSIEST AIRPORT IN THE WORLD

LOCAL AIRPORT: HICKORY REGIONAL AIRPORT (HKY)



WITHIN A 2-DAY TRUCKING TIME OVER 70% OF THE US POPULATION IS ACCESSIBLE AND 35% IS ACCESSIBLE WITHIN 1-DAY OF TRUCKING



PORTS – 3 DEEP-WATER PORTS WITHIN 250 MILES, CHARLOTTE INLAND PORT AND 2 INTERMODAL FACILITIES (CSX AND NORFOLK SOUTHERN)



Scott Millar

President
Catawba County EDC

